



APPLICATION PACK TEACHER OF DANCE





Dear Applicant

Thank you for your interest in the post of Teacher Dance at our School. The School has secured a top 10% progress score, as measured by value added, for the past 9 years and repeated this performance for the last four years at Post 16.

Heston is a high performing, fully inclusive and comprehensive Community School, with over 1300 students including 300+ in our Sixth Form. Occupying approximately ten acres, adjacent to Osterley Park, the School boasts its own leisure centre and fantastic sports facilities, including several multi-surface pitches and a specialist Centre for the Hearing Impaired, serving Hounslow and the surrounding Boroughs.

I trust that the advert and person specification make clear that, first and foremost, we are looking for an exceptional Teacher Dance - a colleague who can contribute to continued academic success for our students as well as instil a lifelong passion for learning.

As with every application pack, it is near impossible to capture definitively the nature and character of the School or the full extent of the role for which you are applying. However, the key qualities that we are looking for in every colleague are intelligence, integrity and a capacity for sustained hard work - professionals that never shy away from rolling up their sleeves to ensure that no member of the School community ever feels that they must work in isolation.

Though I appreciate it is not always possible, I would encourage you to visit the School prior to making an application, to see for yourself the community of staff and students you would join. I am confident that you will experience what many of our visitors and the recent OFSTED inspection commented on:

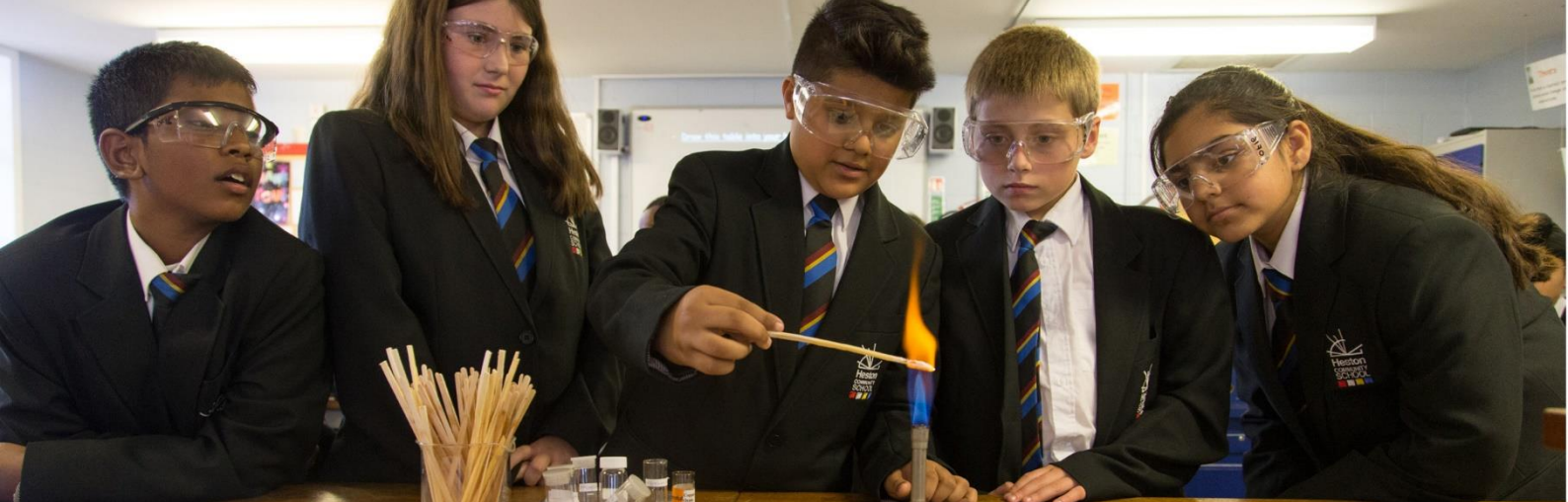
'Pupils speak proudly about 'Hestonian values', such as kindness, honesty, resilience and equality. These values are embedded in the day-to-day life of the school. They provide a shared language for teachers and pupils, inspiring them to be the best that they can be. As a result, pupils' behaviour and attitudes to learning are exceptional.' [OFSTED December 2022]

'Pupils behave exceptionally well in lessons and listen carefully to teachers' explanations. This has a very positive effect on their learning. They enjoy warm and positive relationships among themselves and with their teachers.' [OFSTED December 2022]

Yours sincerely

Mr Ranjit Berdesha

Headteacher



Heston is a high performing School that consistently achieves a Value Added score that places it in the top 10%, or better, of schools nationally. The tables below provide a summary of our Key Stage 4 and 5 examination results.

KEY STAGE 4

Progress 8 Score	2018	2019	2020*	2021**	2022	2023
Whole School	0.68	0.80	--	--	0.56	0.46
English Element	0.65	0.84	--	--	0.57	0.78
Maths Element	0.79	0.79	--	--	0.72	0.47
EBacc Element	0.95	1.12	--	--	0.74	0.58
Open Element	0.40	0.47	--	--	0.29	0.31
Attainment						
9 - 4 EM	71%	73%	76%	75%	77%	73%
9 - 5 EM	51%	53%	60%	51%	60%	52%
EBacc [Strong Pass]	28%	24% [4.71]	35% [4.94]	38% [5.12]	30% [4.85]	31% [4.54]

KEY STAGE 5

A* - B	51%	45%	57%	66%	67%	66%
A* - C	81%	77%	81%	86%	87%	85%
A* - E	99%	99%	99%	99%	100%	97%
A Level ALPS Score	2	3	1	1	2	2

*Centre Assessed Grades

** Teacher Assessed Grades



THE PHYSICAL EDUCATION AND DANCE DEPARTMENT

TEAM OVERVIEW

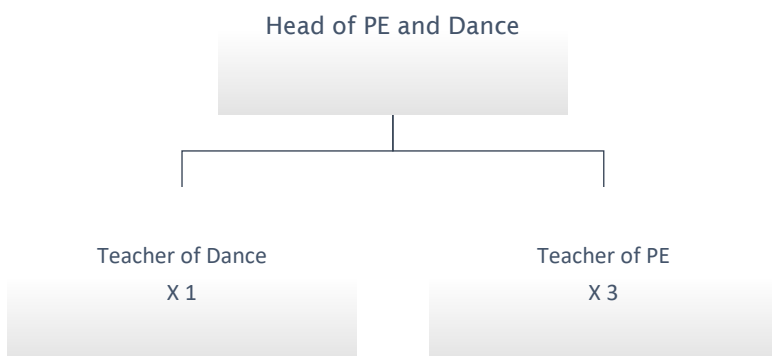
Heston Community School's PE & Dance Department aims to broaden students' horizons and help them develop an understanding of healthy lifestyles, fair play and inspire a love for sport and the expressive arts. Our emphasis is on encouraging participation, building team spirit and to develop our students' resilience and thinking skills.

CURRICULUM OVERVIEW

Heston Community School's philosophy that every child matters is reflected in the work of the PE and Dance Team. Physical Education and Dance are taught across the ability range at KS3. At KS4, PE remains a core subject and students have the option of continuing both subjects at GCSE

STAFFING

The Team is led by the Head of Department and comprises of five full-time teachers. New staff are offered an Induction Programme to facilitate their entry into the life of the School and the community and there is a specific, two-year ECT Induction Programme.



CURRICULUM ACCOMMODATION

The PE and Dance Team enjoys the use of the Sports Hall, Gym, cricket nets, dance studio, two all-weather surfaces and large playing fields.



Heston Road
Heston
Hounslow
TW5 0QR

www.hestoncommunityschool.co.uk
Email: info@hestoncs.org
Telephone: 020 8572 1931