



**Headteacher**  
Ranjit Berdesha BSc (Hons)

Heston Road  
Heston  
Hounslow  
TW5 0QR

**T:** 020 8572 1931

**E:** [info@hestoncs.org](mailto:info@hestoncs.org)

**W:** [www.hestoncommunityschool.co.uk](http://www.hestoncommunityschool.co.uk)

19 October 2020

Dear Parent/Carer

Today we have been advised by Public Health England that there have been two, unrelated, confirmed case of COVID-19 within the School. I can confirm that one student is in Year 13 and one student is in Year 12. Having carefully reviewed and completed a risk assessment with Public Health England, 'contacts' within the School community have been identified and will be asked to self-isolate. All other students are to continue to attend School as per the current arrangements.

**Standard Contact Definition:**

- a person who has had face-to-face contact [within one metre], with someone who has tested positive for Covid-19, including:
  - being coughed on or having a face-to-face conversation within one metre
  - having skin-to-skin physical contact, or
  - contact within one metre for one minute or longer without face-to-face contact
- a person who has been within 2 metres of someone who has tested positive for COVID-19 for more than 15 minutes.

We know that you may find this concerning but we are continuing to monitor the situation and are working closely with Public Health England. This letter is to inform you of the current situation and provide advice on how to support your child. Please be reassured that for most people, coronavirus [Covid-19] will be a mild illness.

**If your child or any member of your household has COVID-19 symptoms, the entire household must self-isolate for 14 days.**

**If your child or any member if your household has been for a COVID-19 test, the entire household must self-isolate until a negative test result is received.**

To reduce the risk of your family becoming ill. Do:

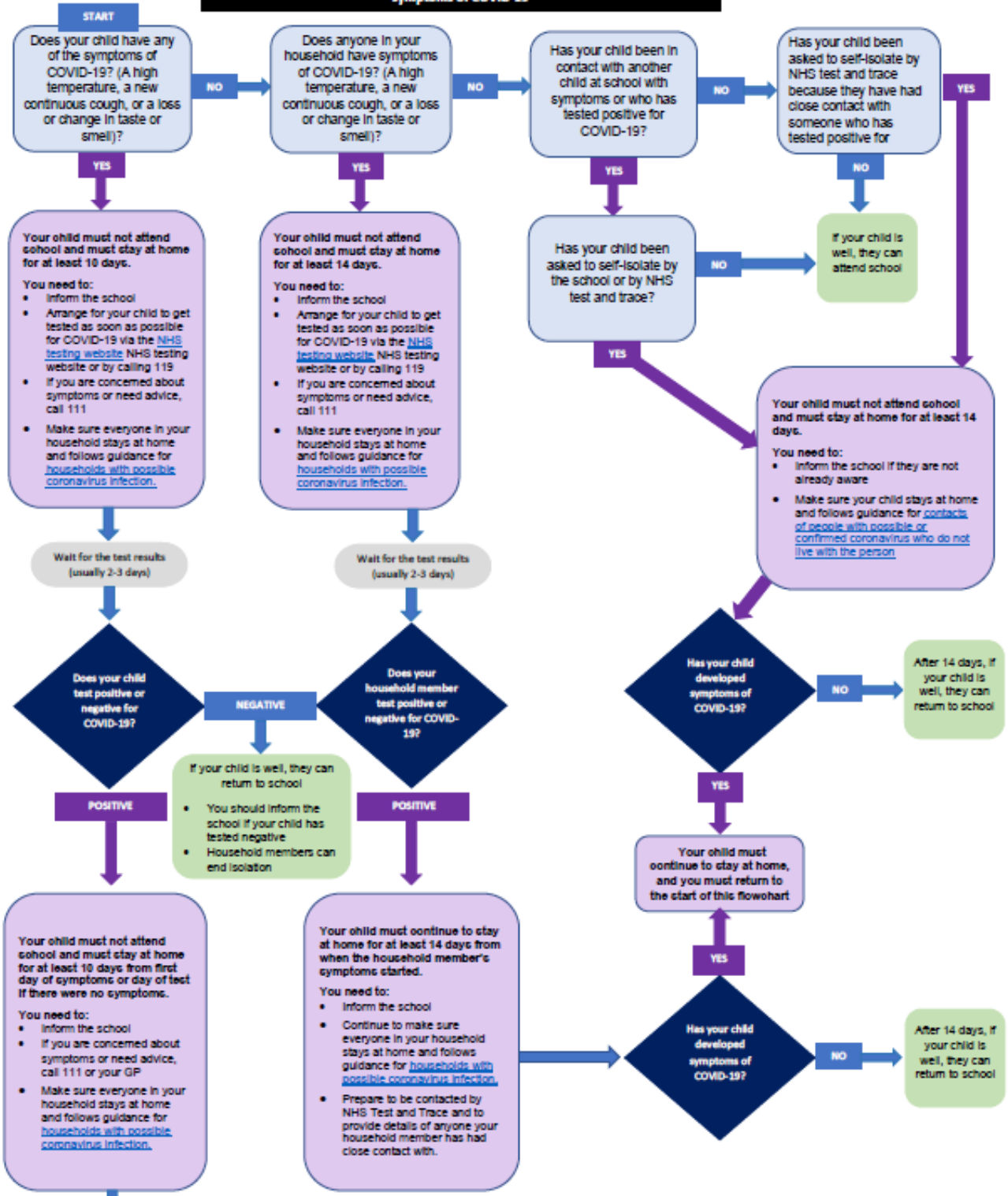
- wash your hands with soap and water often – do this for at least 20 seconds
- use hand sanitiser gel if soap and water are not available
- wash your hands as soon as you get home
- cover your mouth and nose with a tissue or your sleeve [not your hands] when you cough or sneeze
- put used tissues in the bin immediately and wash your hands afterwards
- wear a mask and if any member of a household experiences Covid-19 symptoms, every member of that household must self-isolate, only leaving the house in emergencies, following all Public Health England guidance.

Yours faithfully

M O'Hagan  
Deputy Headteacher

 **Specialist Visual Arts Academy**

**Parent/Guardian: What to do if your child or someone in your household has symptoms of COVID-19**



**COVID-19 SYMPTOMS**

As children return to schools after a prolonged break, we expect colds and similar viral infections to circulate. To be clear the symptoms for COVID-19 are: Raised temperature (>37.8), a new continuous dry cough (coughing a lot for more than an hour, or 3 or more coughing episodes in 24 hours, a loss of taste or smell (cannot taste or smell anything, or things taste or smell different to normal). Your child only needs to have one symptom to stay home and seek a COVID-19 test. If your child has a runny nose and sore throat (without any of the COVID symptoms) they do not need a COVID -19 test.